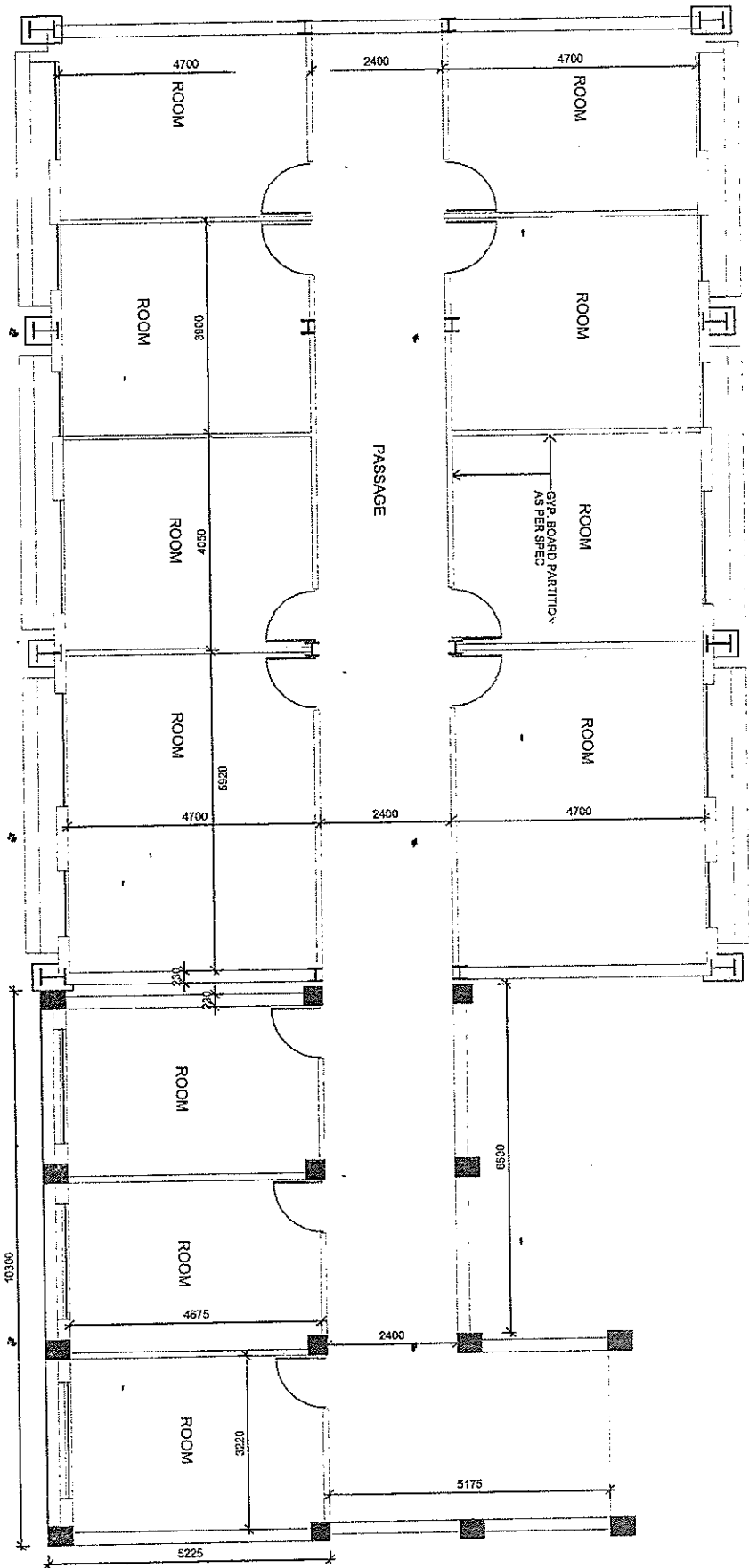




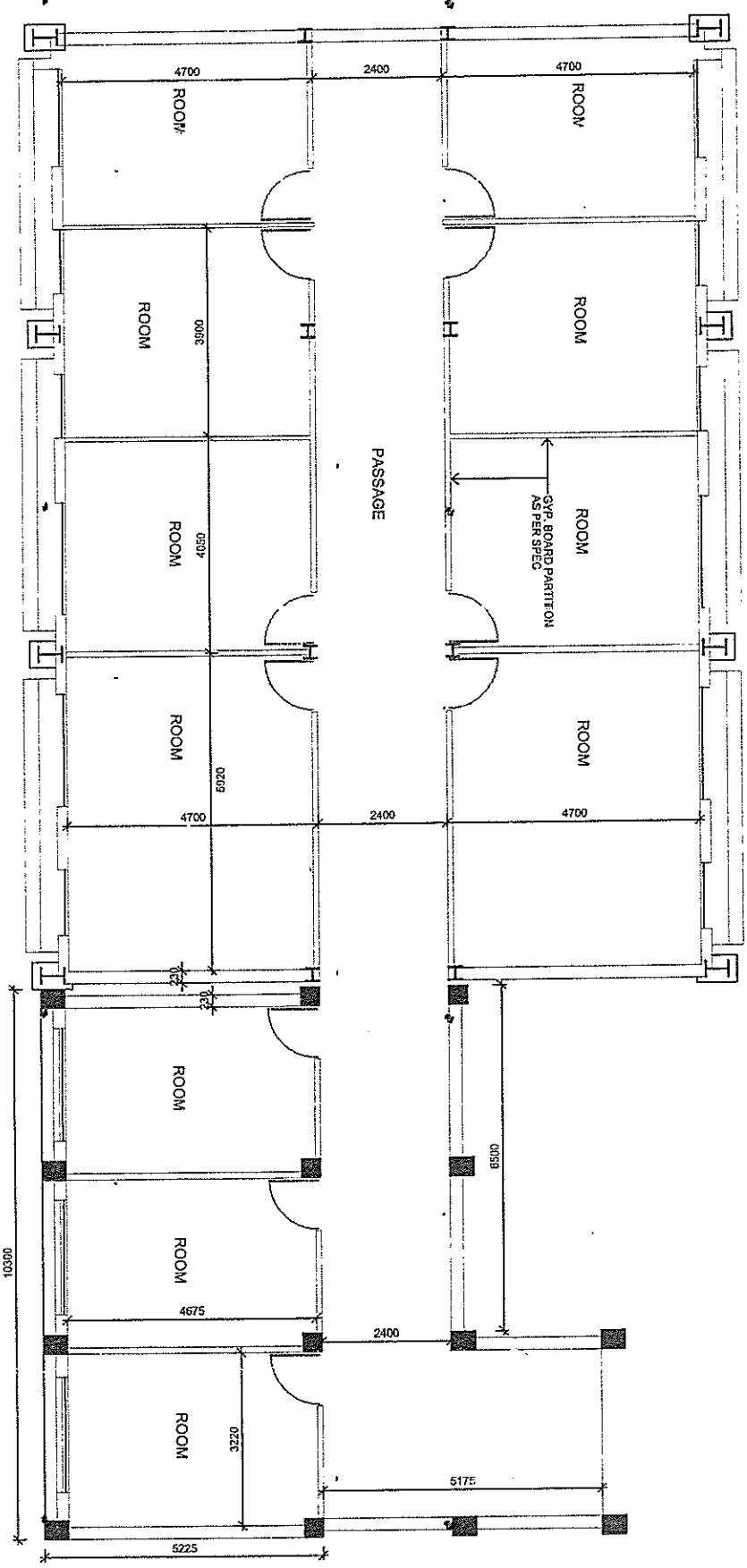
# Ground Floor Plan of Block-C



Handwritten notes and a small diagram in the upper right corner of the page. The notes include '1.00', '1.00', and '38. A FE.'.

Handwritten signature or initials.

Handwritten initials 'R.S.'.



# First Floor Plan of Block-C

*Handwritten notes:*  
 1. 1/2" scale  
 2. 1/4" = 1'-0"  
 3. 1/8" = 1'-0"  
 4. 1/16" = 1'-0"

*Handwritten initials:* RJ