

E-SPIN

NANOTECH PVT. LTD.

www.espinnanotech.com



Board of Company



Prof. Ashutosh Sharma

Mentor

Department of Chemical Engineering
IIT Kanpur



Dr. Sandip Patil

Founder & CEO

Education:

Ph.D IIT Kanpur



Mrs. Jagruti Patil

Managing Director

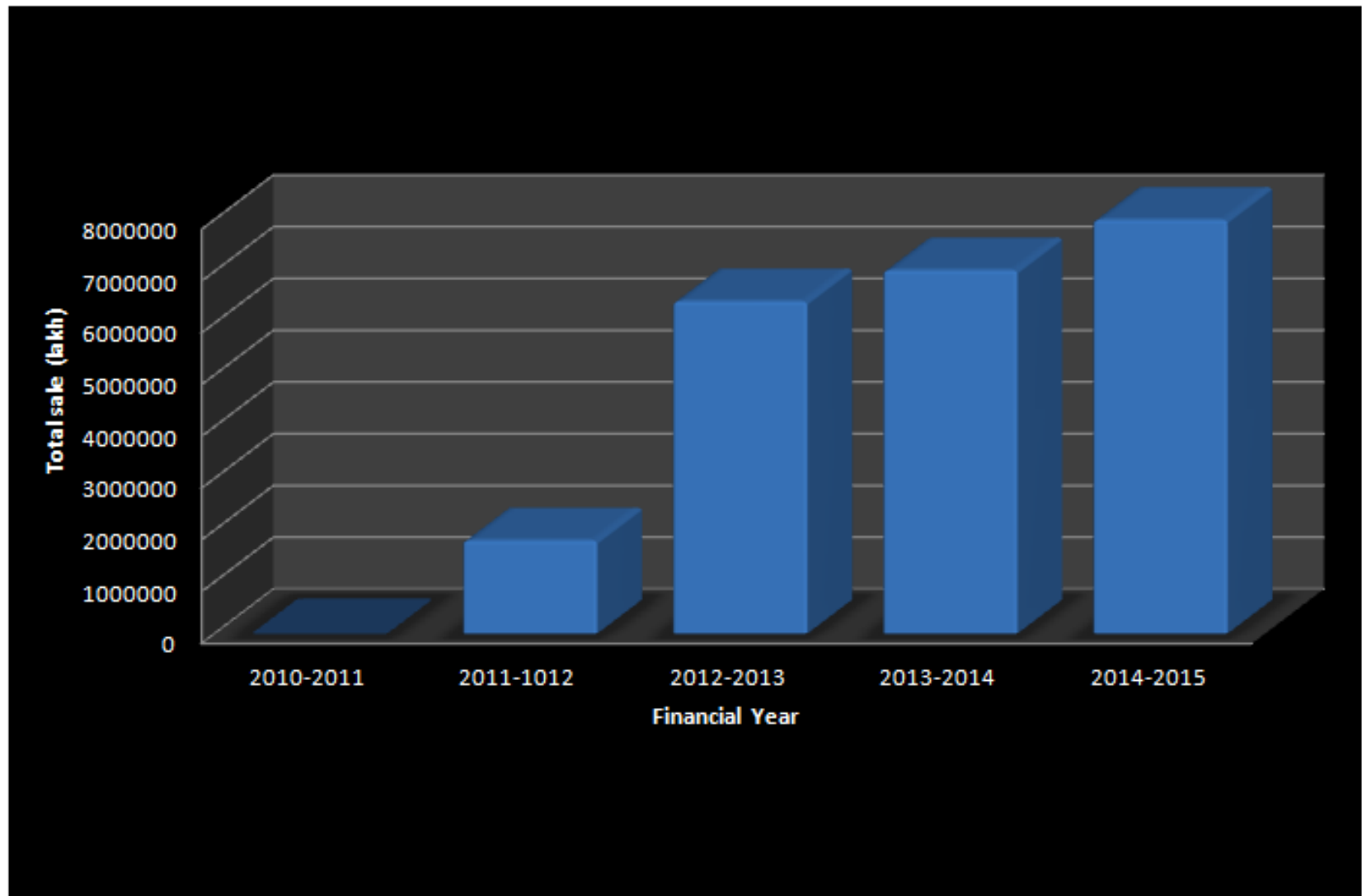
Education: Master of
Computer Management

E-Spin Nanotech Pvt. Ltd

- Founded-2010
- E-Spin Nanotech is a supplier of lab and industrial scale nanofiber production equipments and nanofiber products.
- Strategic Collaborators :
 - I.I.T Kanpur
 - CGCRI Kolkata
 - Sam Higginbottom Institute Technology and Science
 - Techno orbital Pvt. Ltd.
 - UDCT, NMU Jalgaon
 - Tata Chemicals



Annual Growth.....

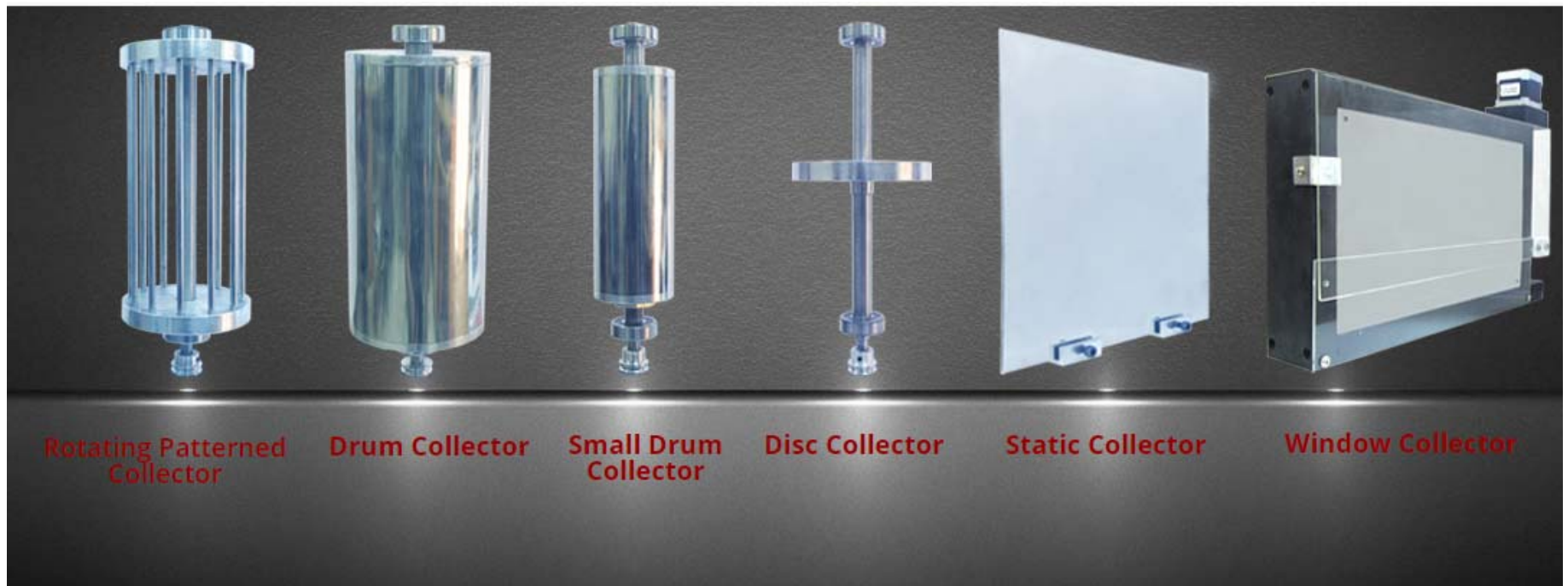


Product : Electrospinning unit for Nanofibers Fabrication



- Super-ES-1 and Super-ES-2 series

Nanofiber production unit : Accessories



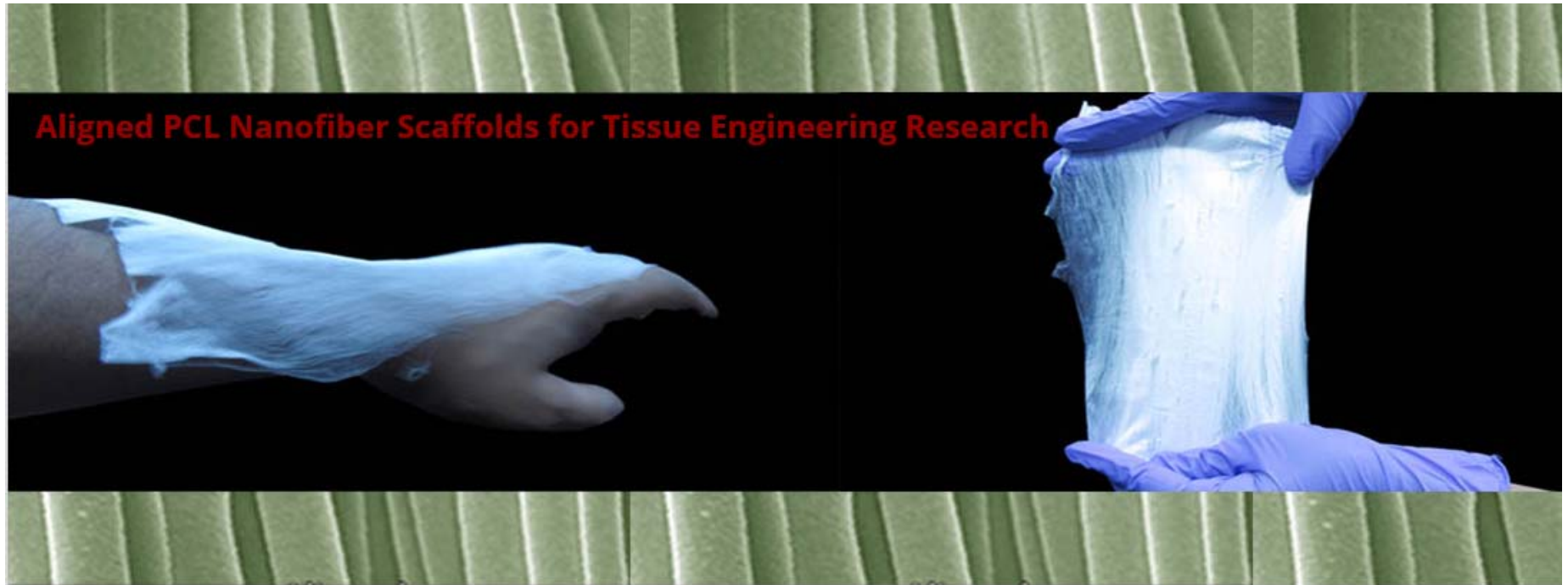
All these accessories are specially designed for nanofiber alignment, easy peeling of nanofibers and strip type and random nanofibers fabrication.

Nanofiber production unit : Accessories



Ultra high resolution syringe pump specially designed for dispensing small amount of liquid during fiber fabrication.

Product: Nanofiber scaffolds



Product: Nano-fiber cell culture plates



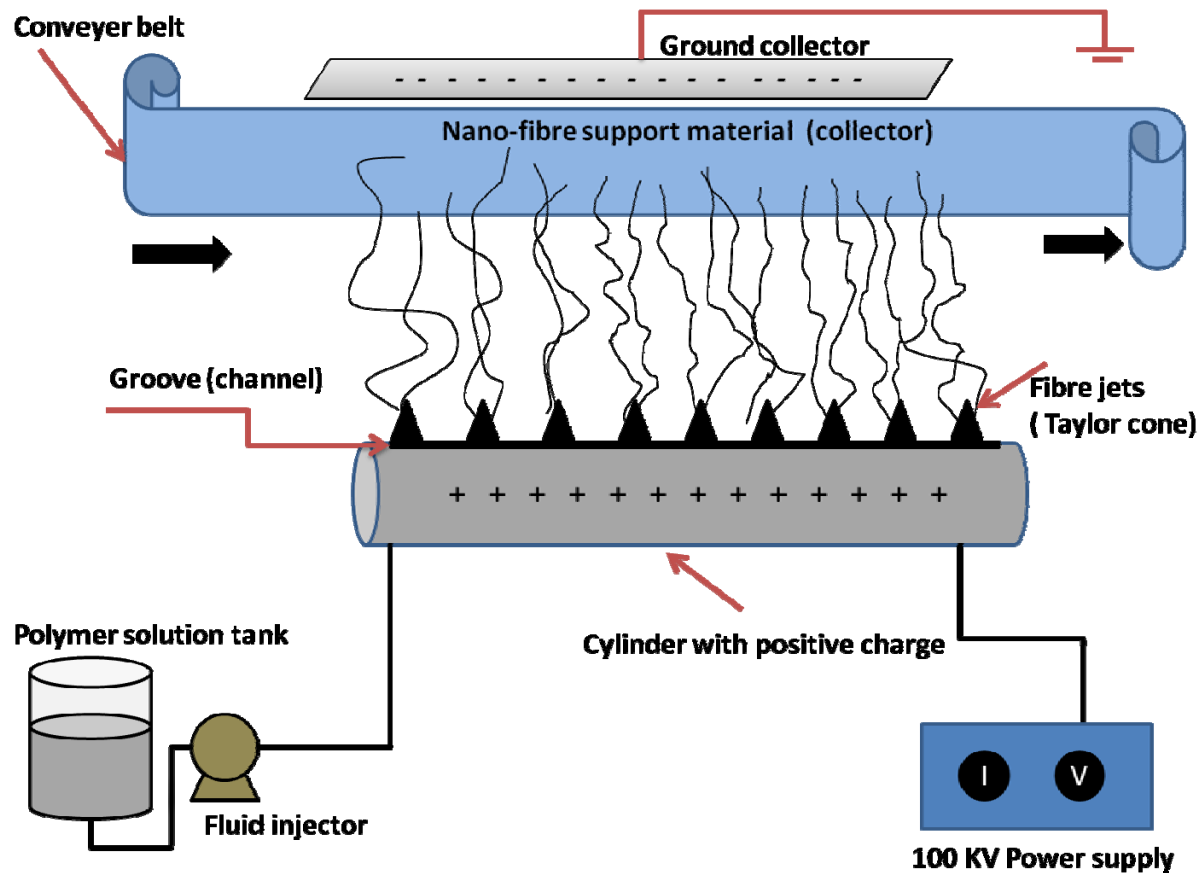
Cell Culture Products

Provides a Platform for Biological Research at Very Low Cost



Present R&D status

- Development of nanofiber technology for industries

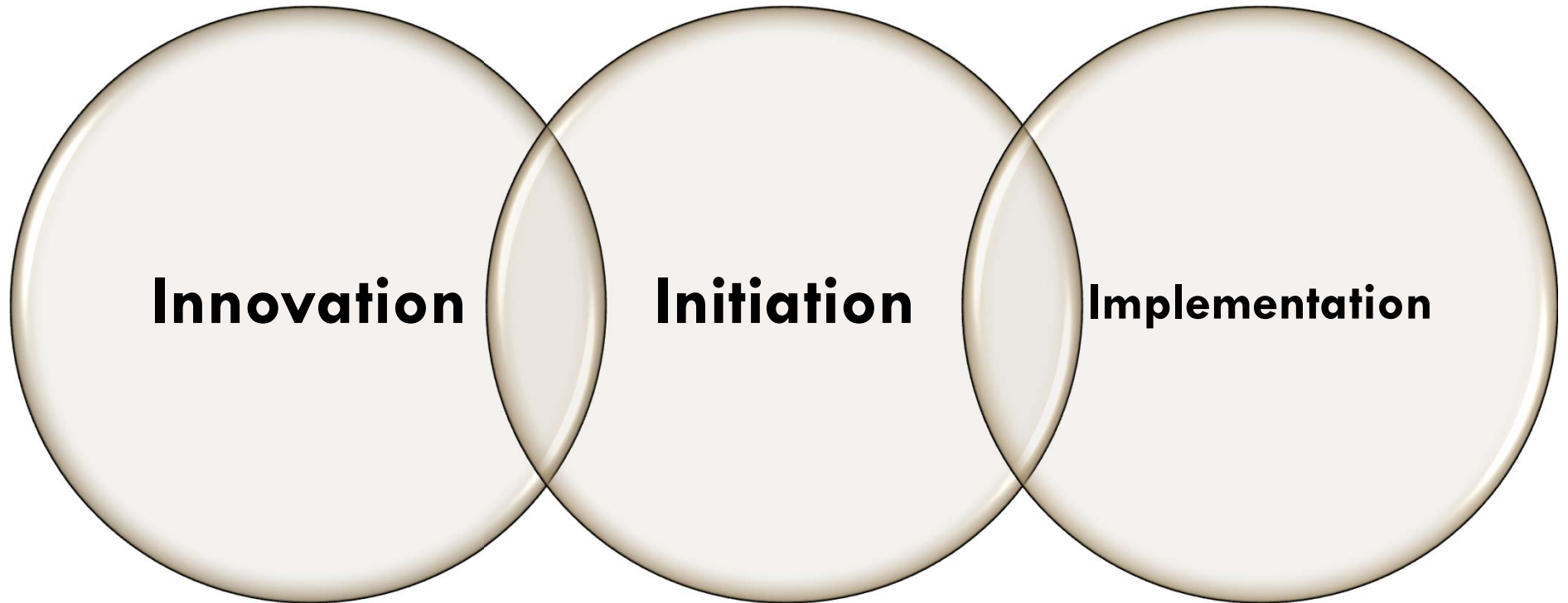


Client....



विद्यारत्नम् महद्गनम्

We Believe



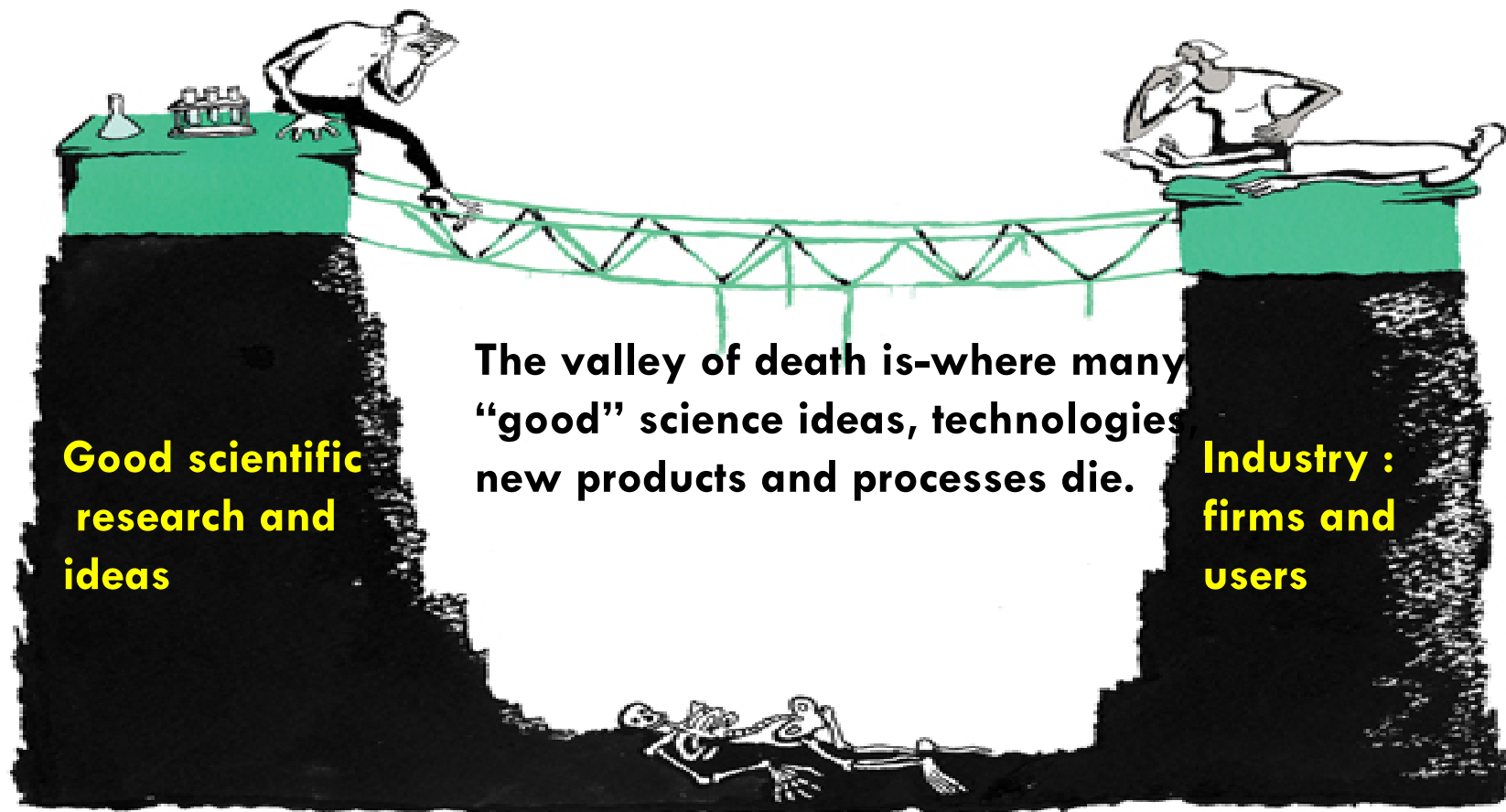
Innovation

Initiation

Implementation

Our Aim.....

Valley of death



Innovation Ecosystem @IITK



- Start-up company registration with help of SIIC: **Easy**
- Incubation process: **Easy**
- Infrastructure: **Excellent**
- Availability of funding: **Excellent**
- Corporate culture : **Just fine**
- Business planning and growth strategy: **Not Much**
- Prototype building and start-up representation to the corporate world: **Not Much**
- Exit plan after maturity: **Just fine**
- Company advertisement at commercial level : **Not Much**

Inputs: institutional approach

University policies and activities:

- Extent to which knowledge transfer and entrepreneurship and innovation (E&I) activities are apparent within institute
- Connections between the E&I activities/policies across the Institute
- Appointment of experts in E&I to deliver training/workshop/talk
- Breadth of activity/resources in place at the Institute (e.g. incubator/accelerator, student competitions, proof of concept centre)
- Level of university resource allocated to Institute/industry interactions
- Extent to which innovation and entrepreneurship are considered in faculty recruitment/promotions procedures
- Whether opportunities are offered by the institute for partnership with regional companies
- Amount of curricular time devoted to entrepreneurship and innovation across all engineering and science disciplines



Good



Just Fine



Institute should consider

Development of Innovation eco-system and Entrepreneurial culture capacity within the Institute

- **Student and staff career intentions and options (self reported)**
- **The prominence of faculty entrepreneurs as role models**
- **The extent to which peer entrepreneurial talent is recognised and admired amongst the student body**
- **Percentage of engineering/technology students and staff involved in voluntary entrepreneurship and innovation activities**
- **Whether student and staff participation in voluntary entrepreneurship activities is increasing**
- **Faculty attitudes towards and level of trust in the institute technology transfer office (or equivalent)**
- **Percentage of faculty engaged in disclosures/patenting activity**

*Thank
You!*